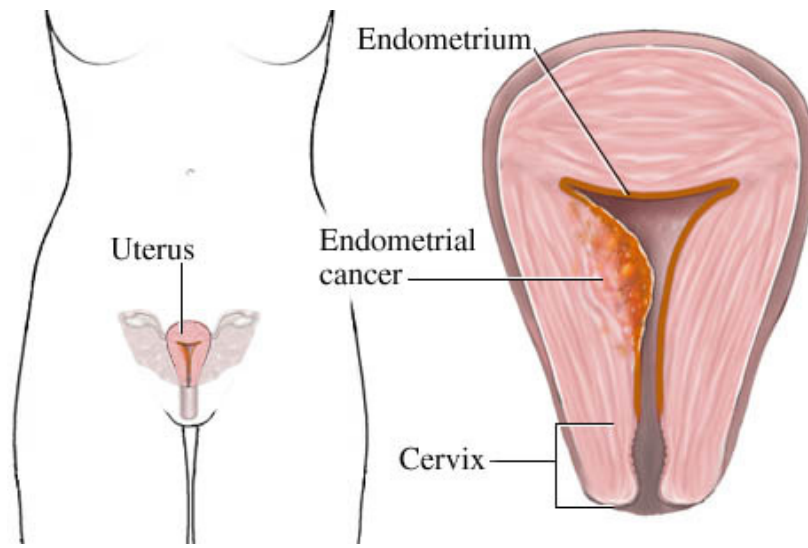


## Cancer of the Uterus (Endometrial Cancer)



Cancer that starts in the lining of the uterus is called endometrial cancer. The standard treatment for this is a hysterectomy (including removal of the tubes and ovaries and often the local lymph nodes.) The stage of the cancer is related to how deep the cancer grows into the lining of the uterus muscle or if it spread to other organs:

Stage IA – lining of the uterus only

Stage IB – inner muscle layer

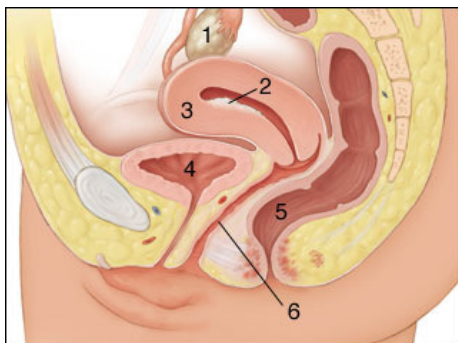
Stage IC – deep muscle invasion

Stage II – spread to cervix

Stage III – spread to ovaries or nodes

The type of cancer is usually adenocarcinoma (means a cancer arising from a glandular organ) and may be slow growing (grade 1) or medium (grade 2) or fast growing (grade 3.)

After surgery the pathologist reviews the removed tissue and if the cancer is found to be a more advanced stage or fast growing type of cancer, then postoperative radiation may be necessary. For more information go to web sites: [www.aboutcancer.com](http://www.aboutcancer.com) or [www.wellspringoncology.org](http://www.wellspringoncology.org)



1. Ovary, 2. Endometrial Cancer, 3. Uterus, 4. Urinary Bladder, 5. Rectum, 6. Vagina