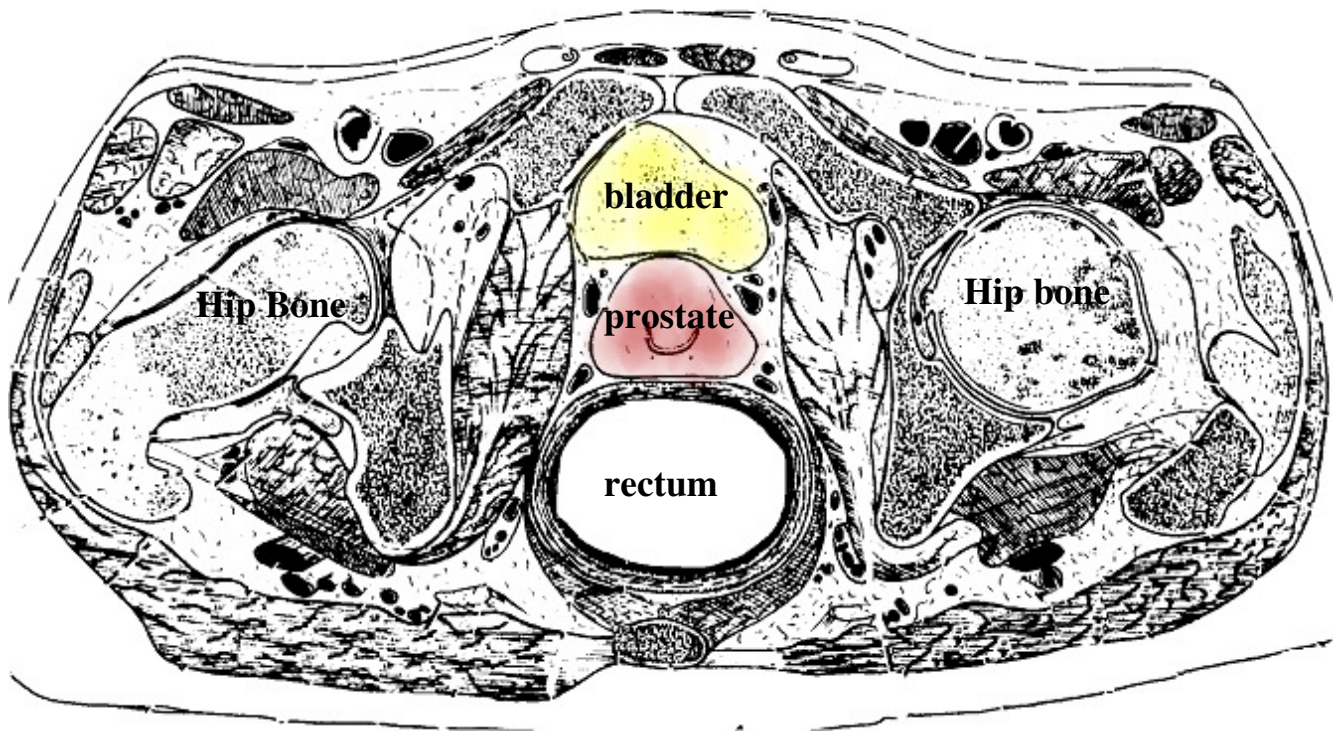


Long Term Side Effects with Prostate Cancer

Organs that are affected by radiation (from CT scan)



There is a small risk of long-term damage to these organs from radiation. Radiation can cause the secretions from the prostate to dry up and there is a risk of impotence of about 30% (it can be higher if Lupron is used as well.)

About 6% of men will have chronic irritation (inflammation) of the bladder (chronic radiation cystitis, with urinary frequency or even bleeding) or of the rectum (chronic radiation proctitis, with diarrhea or rectal bleeding.)

The risk of serious damage (that would require surgery) is less than 1%. Urinary incontinence is quite unusual after radiation unless the man has had significant surgery as well.

Much more detailed information on the internet at: www.wellspring.com