

Side Effects of Pelvic or Abdominal Radiation

The incidence of side effects is related to previous surgery, how big the radiation field, whether chemotherapy is given at the same time, the total dose and size of the radiation field and individual sensitivity. (more information is on Dr. Miller's web site at www.aboutcancer.com)

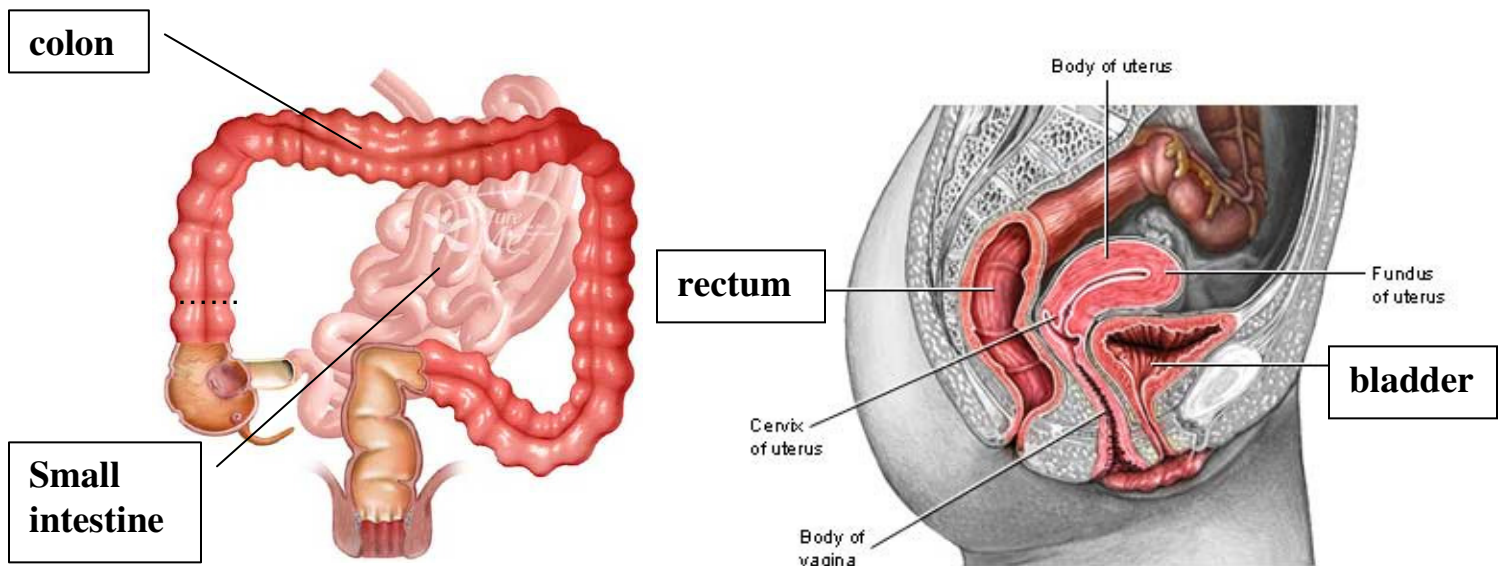
Fatigue – usually mild, if on chemotherapy the blood counts need to be checked

Nausea and vomiting are uncommon but compazine can be used

Diarrhea, more bowel gas, increased frequency and softer stools are quite common, Imodium AD and low residue diets are helpful

Bladder frequency and stinging is common and drinking fluids and cranberry juice is helpful

Rectal irritation is common and rectal ointment (e.g. anusol, nupercainal, Tucks, Vaseline) are helpful



For more information go to web sites: www.aboutcancer.com or www.wellspringoncology.org